

# Transportation From Kansai Airport on 10 September

A shuttle bus will be prepared by the organizer. Please refer to the following detailed information.

## Meeting Time

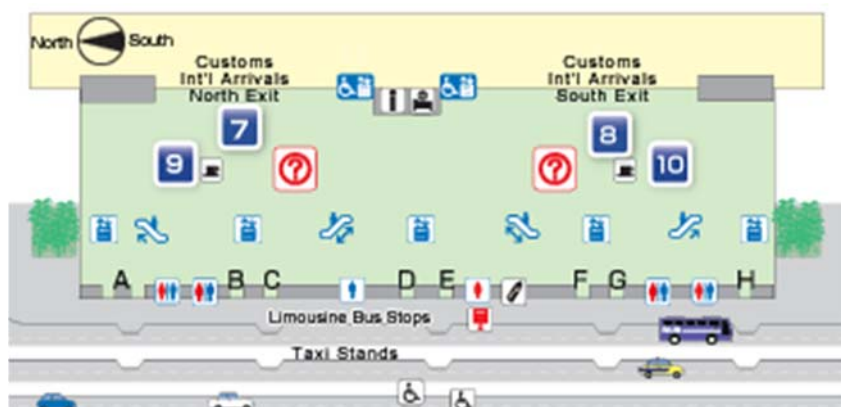
**16:00 pm**

\*A dinner cannot be served since the arrival time at SPring-8 is late at night on the day. (Approximately 20:00). Please prepare your own dinner at the airport before getting on a bus.

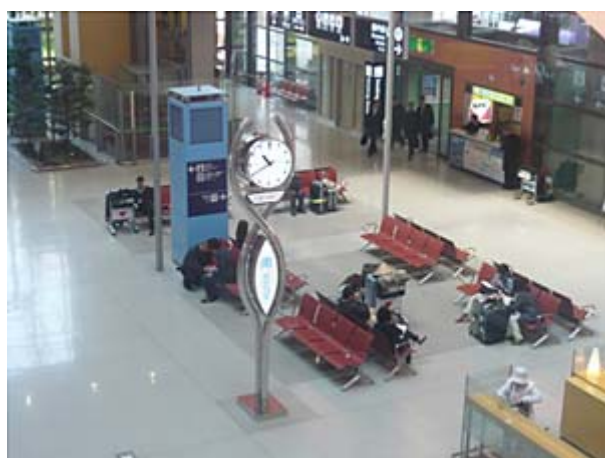
## Meeting Point

There is a big Clock near the South Arrival Gate on the 1<sup>st</sup> Floor as the following photo. A staff will meet you putting up the poster of Cheiron School at this point.

<MAP : 1<sup>st</sup> Floor International Arrival>



<Clock>



<Poster>



<MAP : 1<sup>st</sup> Floor International Arrival>

Kansai Airport : <http://www.kansai-airport.or.jp/en/index.asp>